

Le Tour de l'Alberta 2011

Thank you to our sponsors:



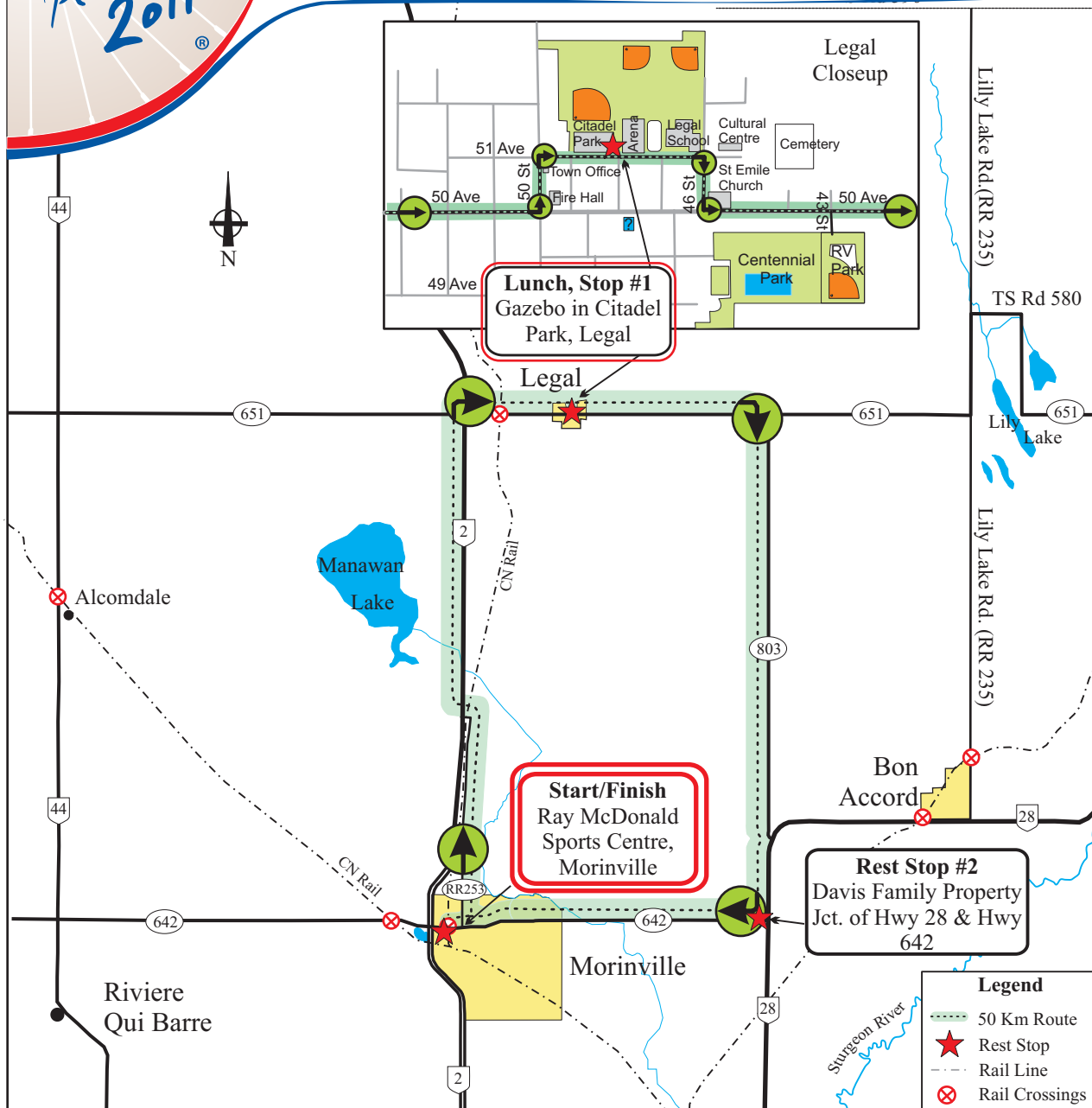
Dist. to Next Rest Stops

Dist. From Start

50 Km Route

Details

Follow the Green Route Signs
Arrive at 9:30 a.m. for 10 a.m. Start



- Km 0 Start-Ray McDonald Sports Centre, 9908 104 St, Morinville.
- 0.1 **-Right @ 100 Ave / Grandin Ave.**
- 0.6 **-Left @ 100 St.** heading North. This becomes RR 253, then RR 252a.
- 7.3 **-Left @ the T jct. on TSR 564.**
- 7.5 **-Right on Hwy 2** North to Legal
- 17.2 **-Right and head East on Hwy 651.**
- 19.6 **-Entering Legal on 50th Ave.**
- 20.5 **-Left on 50 St.**
- 20.6 **-then Right on 51 Ave**
- 20.8 **-Lunch, Stop #1 @ Citadel Park in the gazebo.** Then continue E on 51 Ave.
- 20.9 **-Right on 46 St & Left on 50 Ave.** (becomes Hwy 651 leaving Legal).
- 27.2 **-Right on Hwy 803** heading South.
- 40.9 **-Right and continue South on Hwy 28.**
- 43.5 **-Right on Hwy 642** and head West back to Morinville.
- 43.5 **-Rest Stop #2** just after the turn at the Davis Family Property.
- 51.6 **-Entering Morinville**
- 53.9 **-Left on 104 St,** Morinville
- 54.0 **-Finish, Ray McDonald Sports Centre, Morinville.**

Congratulations !

Did you know that...

Legal is the "National Capital of French Murals". There are over 28 murals celebrating the francophone history of the region painted on buildings in Legal. The route through Legal takes you past a number of these murals.