

Le Tour de l'Alberta 2010

Sponsored by:



Dist. to Next Rest Stops

Dist. From Start

50 Km Route

Details

Follow the Green Route Signs

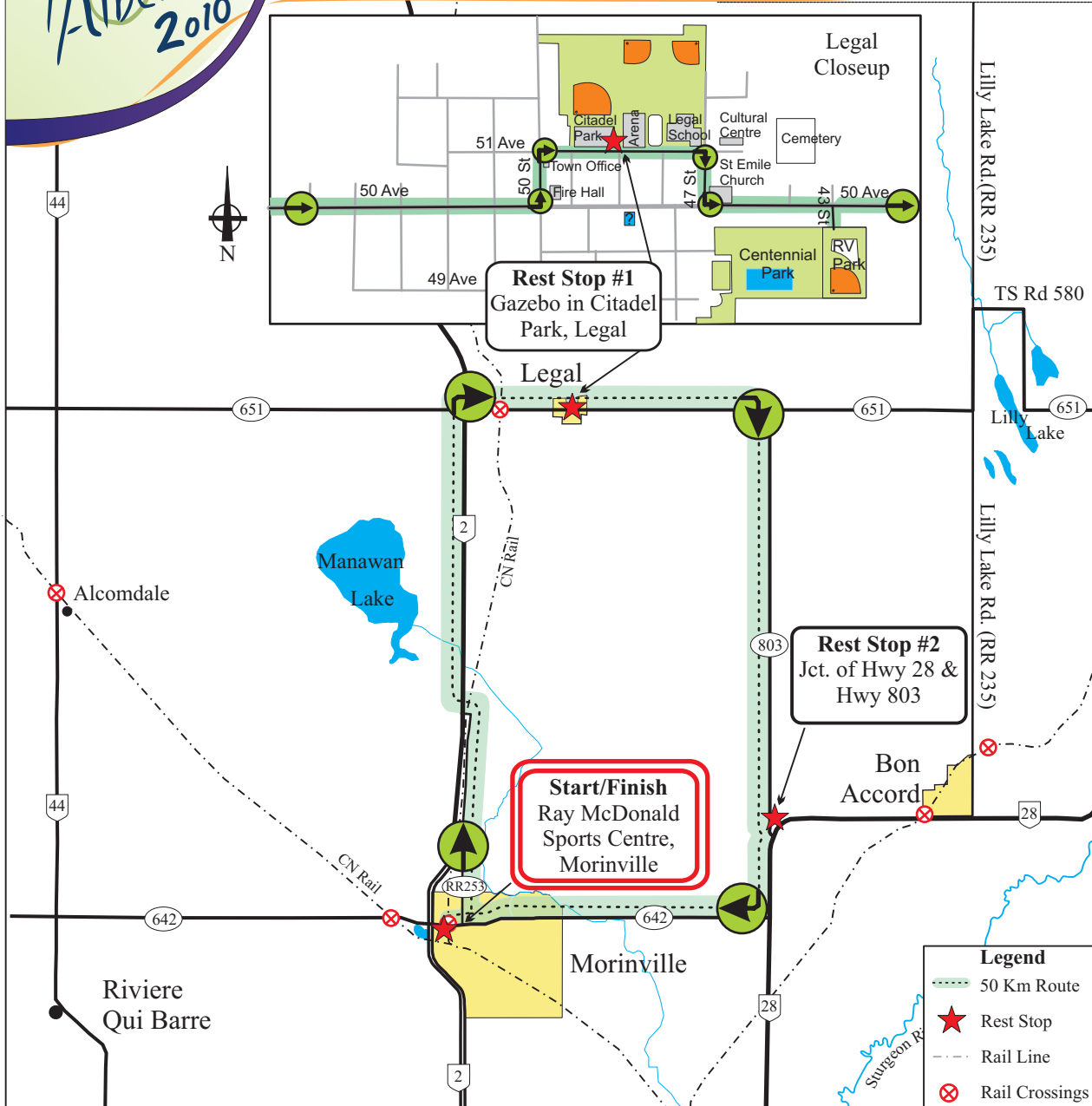
Start-Ray McDonald Sports Centre, 9908 104 St, Morinville.

- Km 0 -Depart **North** on 104 St. to get back to **100 Ave. / Grandin Ave.**
- 0.1 **-Right @ 100 Ave / Grandin Ave.**
- 0.6 **-Left @ 100 St.** to continue N. This becomes RR 253, then RR 252a.
- 7.3 **-Left @ the T jct. on TSR 564.**
- 7.5 **-Right on Hwy 2 North** to Legal
- 17.2 **-Right and head East on Hwy 651.**
- 19.6 -Entering Legal on 50th Ave.
- 20.5 **-Left on 50 St.**
- 20.6 -then **Right on 51 Ave**
- 20.8 **-Rest Stop #1 @ Citadel Park** in the gazebo. Then continue E on 51 Ave.
- 20.9 **-Right on 47 St & Left on 50 Ave.** (becomes Hwy 651 leaving Legal).
- 27.2 **-Right on Hwy 803 heading South.**
- 40.8 **-Rest Stop @ Jct. of Hwy 803 and Hwy 28.**
- 40.9 **-Right and continue South on Hwy 28.**
- 43.5 **-Right on Hwy 642 and head West** back to Morinville.
- 51.6 -Entering Morinville
- 53.9 **-Left on 104St, Morinville**
- 54.0 **-Finish, Ray McDonald Sports Centre, Morinville.**

Congratulations !

Did you know that...

Legal is the "National Capital of French Murals". There are over 28 murals celebrating the francophone history of the region painted on buildings in Legal. The route through Legal takes you past a number of these murals.



Legend

- 50 Km Route
- ★ Rest Stop
- Rail Line
- ⊗ Rail Crossings